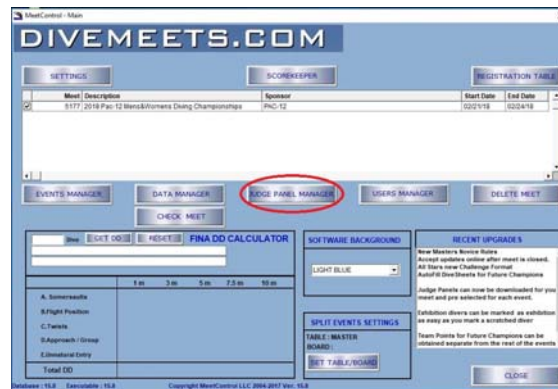


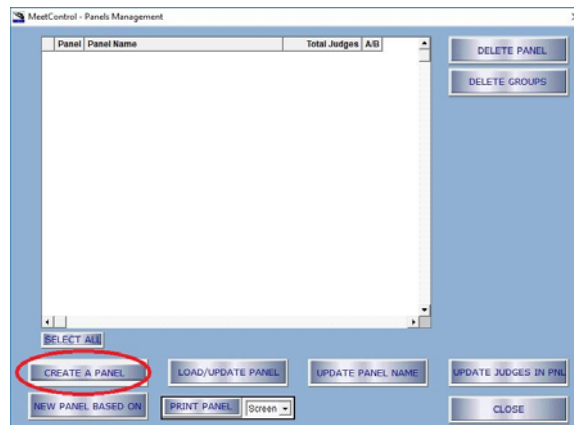


Creating and Copying Judge Panels

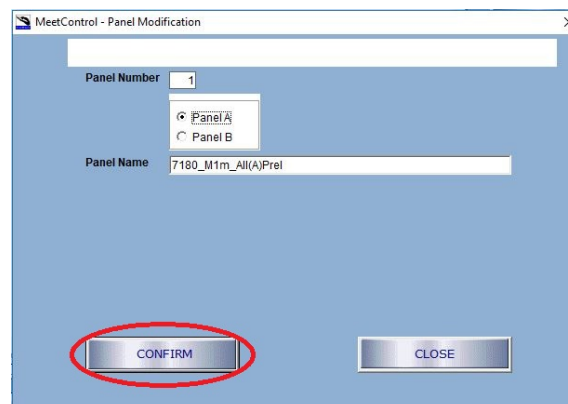
From the main menu of the DiveMeet software, click Judge Panel Manager.



Select Create a Panel

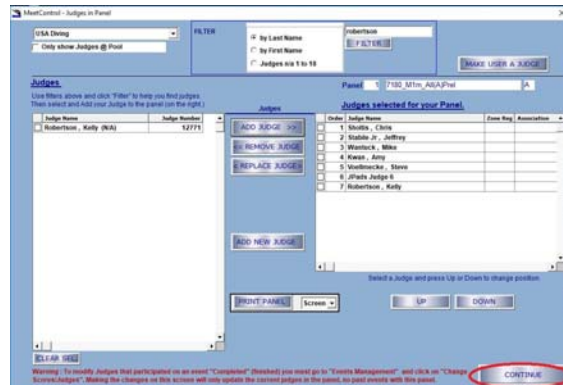


Use the default name for your judge panel or create your own name

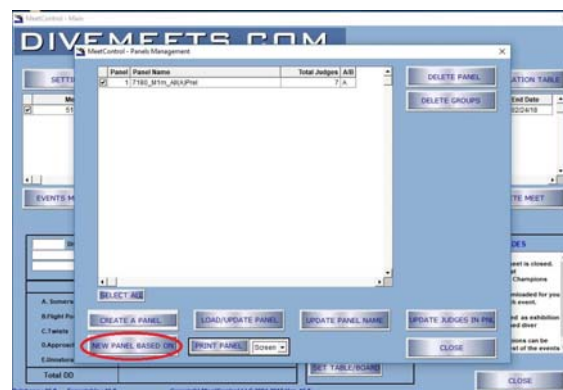




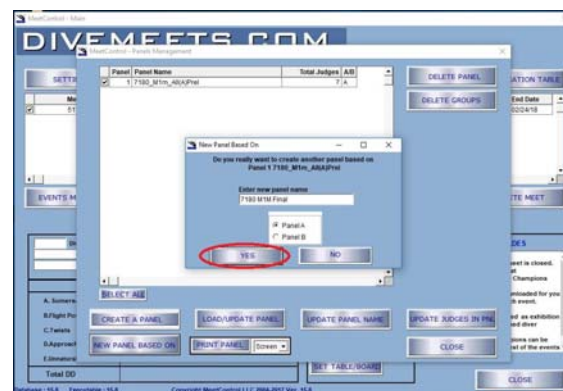
Use filters to find judges and add to your panel, click continue to complete process



To create a new panel based on another panel (copying) check panel name you wish to copy then click new panel based on

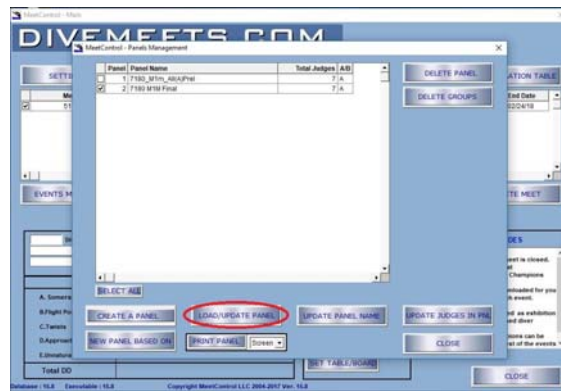


Create panel name





Check newly created panel and click load/update panel



Use the up and down buttons to move judges around

